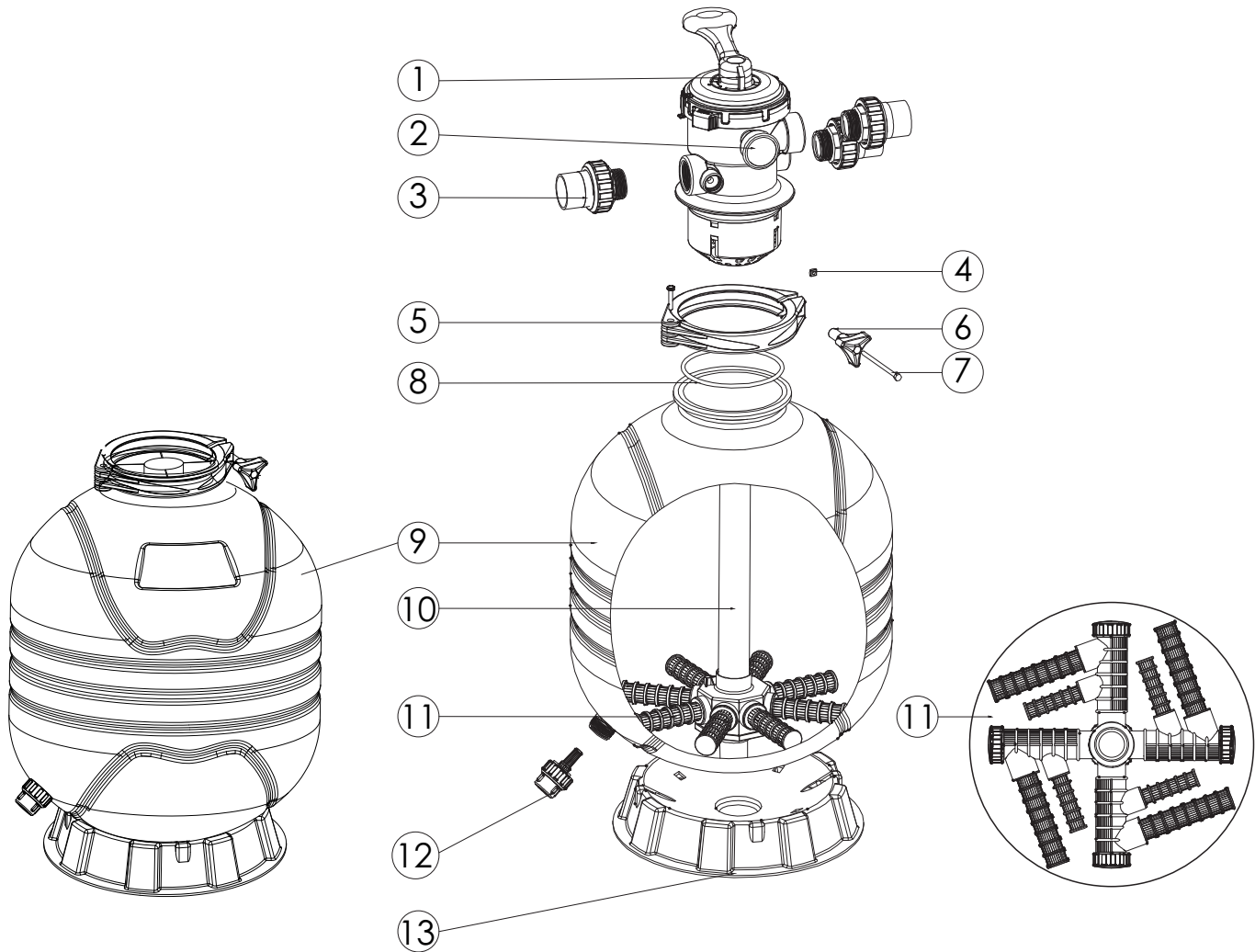


Max Series Top Mount Filter

Model: MFV17, MFV20, MFV24, MFV24B, MFV27A, MFV27, MFV31A, MFV31, MFV35



Max Series Top Mount Filter

Model: MFV17, MFV20, MFV24, MFV24B, MFV27A, MFV27, MFV31A, MFV31, MFV35

Replacement Parts

Key No.	Part No.	Description	Piece(s) Required
1	88281550	MPV07 6 Way 1.5" Top Mount Valve	1
1	88281551	MPV08 6 Way 2" Top Mount Valve	1
2	06021013	Plastic Pressure gauge with O-ring (40psi)	1
2	E190109	Connector for Pressure Gauge/Stopper	1
3	89280102	1.5" union set with O-ring	3
3	89280103	2" union set with O-ring	3
4	03021035	M6 Nut	1
5	89012512	Clamp Kit	1
6	01111101	Star-Shaped Nut	1
7	112000017	M6x125mm Screws	1
8	02010007	O-Ring	1
9	89012501	Filter Tank for MFV17	1
9	89012502	Filter Tank for MFV20	1
9	89012503	Filter Tank for MFV24/MFV24B	1
9	89012504	Filter Tank for MFV27/MFV27A	1
9	89012505	Filter Tank for MFV31/ MFV31A	1
9	89012506	Filter Tank for MFV35	1
10	89012507	Lateral Assembly with Center Pipe for MFV17	1
10	89012508	Lateral Assembly with Center Pipe for MFV20	1
10	89012509	Lateral Assembly with Center Pipe for MFV24	1
10	E010116	Lateral Assembly with Center Pipe for MFV24B	1
10	89012510	Lateral Assembly with Center Pipe for MFV27A	1
10	89012513	Lateral Assembly with Center Pipe for MFV27	1
10	89012511	Lateral Assembly with Center Pipe for MFV31A	1
10	89012514	Lateral Assembly with Center Pipe for MFV31	1
10	89012515	Lateral Assembly with Center Pipe for MFV35	1
11	01172007	Laterals (115mm)	8*
11	01172008	Laterals (126mm)	8*
11	01172010	Laterals (185mm)	4*
12	89011601	Water Drain Set	1
13	01111059	16-18inch Filter Base for MFV17 MFV20	1
13	01111062	21-28inch Filter Base for MFV24 MFV24B MFV27A MFV27A	1
13	01112037	31-35inch Filter Base for MFV31A MFV31 MFV35	1

Notes : MFV17 should have 8pcs of Lateral (115mm)
MFV20/ MFV24/ MFV27A should have 8pca of Lateral (126mm)
MFV27/ MFV31/ MFV35 should have 4pcs of lateral (115mm) and 4pcs of lateral (185mm)